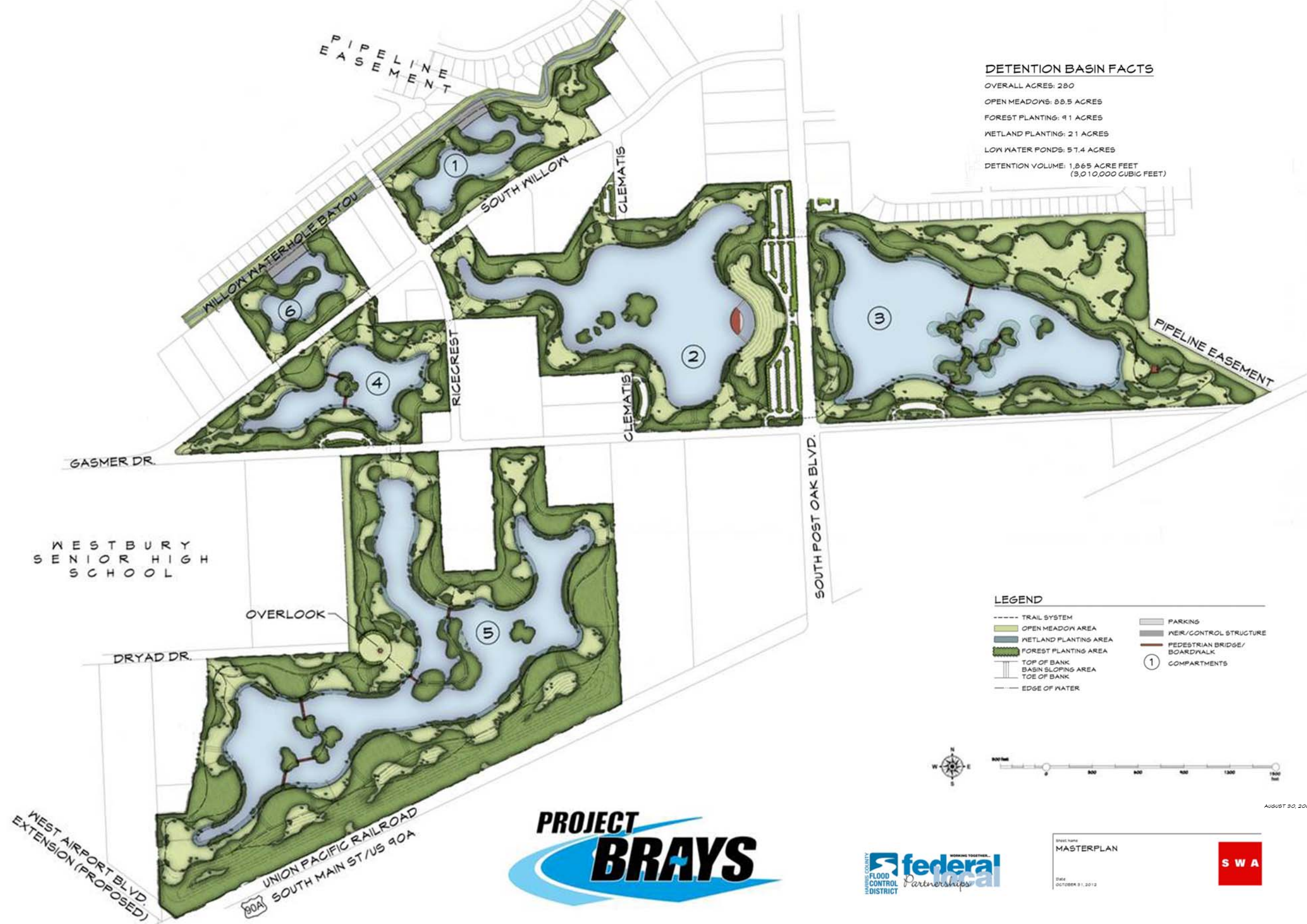


# Willow Waterhole Stormwater Detention Basin



**DETENTION BASIN FACTS**  
 OVERALL ACRES: 28.0  
 OPEN MEADOWS: 28.5 ACRES  
 FOREST PLANTING: 9.1 ACRES  
 WETLAND PLANTING: 2.1 ACRES  
 LOW WATER PONDS: 57.4 ACRES  
 DETENTION VOLUME: 1,865 ACRE FEET  
 (3,010,000 CUBIC FEET)

**LEGEND**

---	TRAIL SYSTEM	█	PARKING
█	OPEN MEADOW AREA	█	WEIR/CONTROL STRUCTURE
█	WETLAND PLANTING AREA	█	PEDESTRIAN BRIDGE/BOARDWALK
█	FOREST PLANTING AREA	①	COMPARTMENTS
---	TOP OF BANK		
---	BASIN SLOPING AREA		
---	TOE OF BANK		
---	EDGE OF WATER		



AUGUST 30, 2006



Project Name: MASTERPLAN  
 Date: OCTOBER 31, 2012